

POLYPRO™ 6060

Thixotropic | High Build
.006 - .008" thick w.f.t.

HEAVY DUTY | SEVERE SERVICE ALIPHATIC ONE COMPONENT (2k) POLYUREA TOPCOAT "MIAC"™ (Moisture Initiated | Amine Cured) Color Stable - Highly Resistant To Fading

APPLICATION

CHARACTERISTICS

Mix ratio: 1:1 by volume

Application methods:

Brush, roller, squeegee and spray (airless, air-assisted airless and pressure pot)

WARNING: Spraying by any method produces fugitive mist, vapors and fumes. Extreme care must be exercised to protect personnel from exposure. Air exhausting equipment (fans / ducting) must be used to dissipate the fumes appropriately. Confined spaces require extra measures for safety. Isolation of the spray area may be necessary.

Solids (volume), No solvents. 100% theoretical.

Theoretical coverage:

1604 mil sq. ft. / gal.

401 sq. ft. / gal. (4 mil film)

Curing schedule: @ 4 mils thickness

(72°F / 50 % R. H.)

Dry to touch: 40-50 minutes

Tack-free and firm: 2 hours

Through: 24 hours

Full physicals: 7 days

To Recoat:

Minimum: 2 hours

Maximum: 12 hours

Note: If maximum recoat time is exceeded, abrade surface and chemically activate. Cure time is temperature, humidity and film thickness dependant.

Pot life (no sweat-in time required):

Fully open: 1 hour

Covered / unsealed: 2-3 hours

Sealed: 8 hours

Shelf life:

6 months unopened @ 72°F

Cleanup:

VTI CS-100 cleaning solvent, ketones.

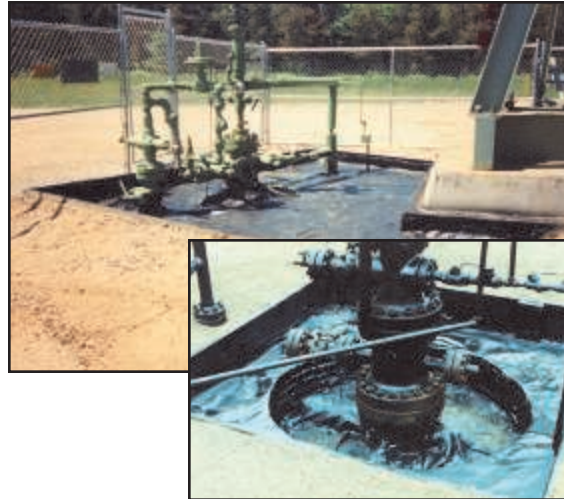
Color Availability:

Wide range.

Packaging:

10 gal.

102 gal. kits. (Equal "A" & "B")



"POLYPRO" direct to substrate capabilities provides an excellent single-coat system with reduced installation cost. Has high gloss and retains excellent clarity and gloss during extended service periods. Compatible over properly cleaned and prepared cold-rolled and hot-rolled steel. POLYPRO exhibits excellent adhesion to concrete providing a durable, glossy, easy to clean surface. May be used over zinc-rich primers as a direct weather-resistant topcoat for heavy duty service and over intact, properly prepared existing paint as a maintenance product. POLYPRO's fast tack-free and full curing time is ideal for fast turnaround requirements. POLYPRO's unique, extreme moisture insensitivity permits unequalled use in high humidity conditions and wet environments.

Typical Uses

- Walls and Ceilings
Warehouse | Manufacturing | Office | Shop
- Structural Steel
Bridges | Tanks | Piping
- Industrial Plants
Chemical | Petroleum | Wastewater | Power Pulp & Paper | Manufacturing | Food & Beverage | Agricultural
- Marine
Ship Hulls | Docks | Decking | Offshore Platforms | Superstructures | Barges
- Transportation
Railcar interiors/exterior | Truck exterior | Buses | Aircraft

Product Data

- Ideal for vertical, overhead and horizontal
- No solvents, 100 % solids, "0" VOC, low odor
- High-gloss, self-priming coating, rapid tack time
- Excellent gloss retention
- Use over wood, concrete and metal
- Extremely moisture insensitive
- Color stable, UV resistant topcoat
- Outstanding abrasion and impact resistance
- Tough, flexible, highly elastomeric polymer

Typical Physical Properties

	ASTM	VALUE
	METHOD	7 DAYS
• Elongation, %	D-638	480
• Tensile, psi	D-638	6000
• Tear, notched, pli	D-624	550
• Hardness	Shore "D"	50

Typical Performance Data

- Initial Gloss, 60° D-52 88
- Gloss Retention D-26 excellent
(weatherometer-3000 hrs.)
- Adhesion:
 - Dry tape D-3359 5B - "0" delam.
 - Dry scrape D-2197
 - Wet tape (24 hrs. @ 70°F) 5B - "0" delam.
- Chemical Resistance D-1308 (7 day spot test)
 - acid - 10% HCl pass
 - acid - 5% Acetic pass
 - base - 10% NaOH pass
 - motor oil pass
- Solvent Resistance D-4752 (double rubs)
 - MEK 5 - no effect
 - Toluene 5 - no effect
 - Isopropanol 4 - slight burnish
- Flexibility 73°F(23°C) -20°F(-29°C)
 - 1/4 dia. Mandrel D-1737 pass pass
 - conical mandrel D-522 pass pass
- Taber Abrasion D-4060 9 mg. Loss
(CS-17, 1000 CYCLES, 1KG. LOAD)
- Dry Heat Resistance D-2485 300°F(149°C)
- Impact Resistance D-2794
 - direct >160 in-lb
 - indirect >160 in-lb
- Permeability (MVT @ .030 in. equiv.) 0.01permsmoisture content is too high.

900 McFarland 400 Blvd. | Alpharetta, GA 30004
770.495.9554 (tel) 404.521.4396 (fax) | visuron@hansonco.net



VISURON
TECHNOLOGIES, INC.