

POLYPRO™



table of contents

Products Included

POLYPRO™ PRO
CONCRETE PRIMER

POLYPRO™ 2058

POLYPRO™ 2060

POLYPRO™ 2062
CLEARCOAT

POLYPRO™ 6058

POLYPRO™ 6060

POLYPRO™ 6062
CLEARCOAT

POLYPRO™ 6120

POLYPRO™ 6122
CLEARCOAT

Coating Solutions

POLYPRO™ PRO CONCRETE PRIMER	p. 2
Product Data	
POLYPRO™ 2058	p. 3
Product Data	
POLYPRO™ 2060	p. 4
Product Data	
POLYPRO™ 2062 CLEARCOAT	p. 5
Product Data	
POLYPRO™ 6058	p. 6
Product Data	
POLYPRO™ 6060	p. 7
Product Data	
POLYPRO™ 6062 CLEARCOAT	p. 8
Product Data	
POLYPRO™ 6120	p. 9
Product Data	
POLYPRO™ 6122 CLEARCOAT	p. 10
Product Data	
Case History POLYPRO™	p. 11
Floor Coating: 10-12 mils thick (1) coat returned to service in 15 hours	
Case History POLYPRO™	p. 12
Building Envelope Waterproofing	
Case History POLYPRO™	p. 13
Building Envelope Waterproofing	
Case History POLYPRO™	p. 14
Plywood Deck Restoration	
Case History POLYPRO™	p. 15
Mezzanine Roof Waterproofing	
Product Guide	p. 16-24
All Visuron Products Information	



POLYPRO™

PRO CONCRETE PRIMER

ONE COMPONENT (2k) POLYUREA MOISTURE TOLERANT | SOLVENT FREE “MIAC”™ (Moisture Initiated | Amine Cured)

APPLICATION

CHARACTERISTICS

Mix ratio: 1:1 by volume

Application methods:

Brush, roller, squeegee and
spray (airless, air-assisted airless
and pressure pot)

WARNING: Spraying by any method produces fugitive mist, vapors and fumes. Extreme care must be exercised to protect personnel from exposure. Air exhausting equipment (fans / ducting) must be used to dissipate the fumes appropriately. Confined spaces require extra measures for safety. Isolation of the spray area may be necessary. Solids (volume). No solvents. 100% theoretical.

Theoretical coverage:

1604 mil sq. ft. / gal.

401 sq. ft. / gal. (4 mil film)

Work-cure schedule @ 4 mils thick (72 °F / 50% R. H.)

Tack-free and firm: 30 - 40 min.

Through: 24 hours

Full physicals: 7 days

To Recoat:

Minimum: As work-cure
obtained / tack-free

Maximum: 12 hours

Note: If maximum recoat time is exceeded, abrade surface and chemically activate. Cure time is temperature, humidity and film thickness dependant.

Pot life (no sweat-in time required):

Fully open: 1 hour

Covered / unsealed: 2-3 hours

Sealed: 6 hours

Shelf life: 6 months unopened @
72°F

Cleanup: VTI CS-100 cleaning solvent,
ketones.

Color Availability: Clear

Packaging:

10 gal.

102 gal. kits. (Equal “A” & “B”)



Application Conditions

Mix ratio: 100 parts “A” / 100 parts “B”

Use as received. Solvent not required

Note: Adhesion to dry concrete will be slightly better than adhesion to wet concrete. It is always best to work with concrete as dry as is possible.

Working time: 6 hours (tightly covered container)
3 hours (loosely covered container)
1 hour (uncovered)

Application temperatures: Minimum 38°F
Maximum - none

Application methods:

Roller, brush and squeegee

Spray - airless, air-assisted airless, press. pot

WARNING: Spraying by any method produces fugitive mist, vapors and fumes. Extreme care must be exercised to protect personnel from exposure. Air exhausting equipment (fans/ducting) must be used to dissipate the fumes appropriately. Confined spaces require extra measures for safety. Isolation of the spray area may be necessary.

Directions For Use

- Measure equal volume of parts “A” & “B”.
- Slowly add part “B” into part “A” at required volume while mixing. Mix thoroughly (approximately 60 seconds by hand or 30 seconds mechanically. Apply by desired method.
- Note: Primer is ready to be applied immediately after mixing. No induction period is necessary.
- Allow primer to obtain a work-cured, tack-free state prior to applying POLYARMOR® or POLYPRO™ polyurea

Product Data

- Once component (2K) polyurea system
- Moisture tolerant - cures well over damp concrete
- No solvents, 100 % solids, “0” VOC, low odor
- High elasticity. Not brittle
- Low viscosity. Low odor
- Reactive polymer designed to wick into concrete
- Extremely moisture insensitive
- Assists in sealing porous concrete
- Promotes adhesion of topcoat to concrete
- Tough, flexible, highly elastomeric primer

Work Cure Times: @ 60 °F @ 85 °F
(approximate)

dry concrete	45 min.	20 min.
wet concrete	90 min.	60 min.

Maximum Re-Coat Time: 12 hours

Coverage: Approximately 200 - 250 sq. ft. per gal. the actual coverage is dependent upon surface texture and porosity. Cleaning, followed by grit or shot blasting prior to priming is usually necessary.

Twenty four hours required for primer to reach full cure.

Surface Preparation

Surface preparation is the most critical portion of any successful concrete coating application. All substrates must be properly prepared. *Remember - THERE ARE NO SHORTCUTS TO A SUCCESSFUL CONCRETE COATING JOB.*

Concrete - Present Conditions

Slabs on ground or on grade must have an efficient vapor barrier to prevent moisture vapor transmission. Test for moisture following ASTM D-4253 Plastic Sheet Test. Tape down a piece of clear plastic to concrete for 24 hours. If moisture collects of slab has darkened, moisture content is too high.

900 McFarland 400 Blvd. | Alpharetta, GA 30004
770.495.9554 (tel) 404.521.4396 (fax) | visuron@hansonco.net



POLYPRO™ 2058

Non-High Build
.004" max vertical w.f.t. | .008" max horizontal w.f.t.

STANDARD DUTY / REGULAR SERVICE ALIPHATIC ONE COMPONENT (2k) POLYUREA TOPCOAT "MIAC"™ (Moisture Initiated | Amine Cured) Color Stable | Highly Resistant To Fading

APPLICATION CHARACTERISTICS

Mix ratio: 1:1 by volume

Application methods:

Brush, roller, squeegee and
 spray (airless, air-assisted airless
 and pressure pot)

WARNING: Spraying by any method produces fugitive mist, vapors and fumes. Extreme care must be exercised to protect personnel from exposure. Air exhausting equipment (fans / ducting) must be used to dissipate the fumes appropriately. Confined spaces require extra measures for safety. Isolation of the spray area may be necessary.

Solids (volume), No solvents. 100% theoretical.

Theoretical coverage:

1604 mil sq. ft. / gal.
 401 sq. ft. / gal. (4 mil film)

Curing schedule: @ 4 mils thickness
 (72°F / 50 % R. H.)

Dry to touch	40-50 minutes
Tack-free and firm:	2 hours
Through:	24 hours
Full physicals:	7 days
To Recoat:	
Minimum:	2 hours
Maximum:	12 hours

Note: If maximum recoat time is exceeded, abrade surface and chemically activate. Cure time is temperature, humidity and film thickness dependant.

Pot life (no sweat-in time required):

Fully open:	1 hour
Covered / unsealed:	2-3 hours
Sealed:	8 hours

Shelf life:

6 months unopened @ 72°F

Cleanup:

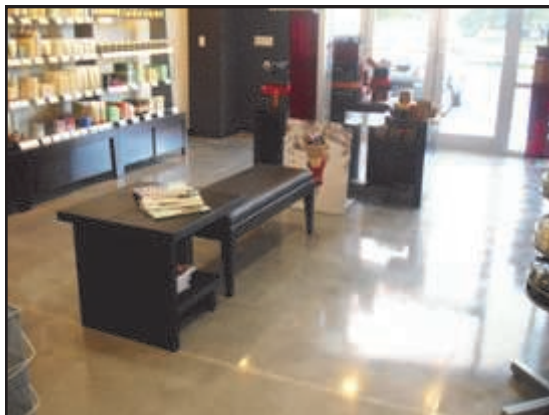
VTI CS-100 cleaning solvent, ketones.

Color Availability:

Wide Range

Packaging:

10 gal.
 102 gal. kits. (Equal "A" & "B")



"POLYPRO" direct to substrate capabilities provides an excellent single-coat system with reduced installation cost. Has high gloss and retains excellent clarity and gloss during extended service periods. Compatible over properly cleaned and prepared cold-rolled and hot-rolled steel. POLYPRO exhibits excellent adhesion to concrete providing a durable, glossy, easy to clean surface. May be used over zinc-rich primers as a direct weather-resistant topcoat for heavy duty service and over intact, properly prepared existing paint as a maintenance product. POLYPRO's fast tack-free and full curing time is ideal for fast turnaround requirements. POLYPRO's unique, extreme moisture insensitivity permits unequalled use in high humidity conditions and wet environments.

Typical Uses

- Light to regular duty service where color stability is important
 Warehouse | Manufacturing | Office
- Industrial Plants
 Chemical | Petroleum | Wastewater | Power
 Pulp & Paper | Manufacturing | Food &
 Beverage | Agricultural
- Flat Industrial and Commercial Roofing

Product Data

- Ideal for horizontal work and thin film vertical
- No solvents, 100 % solids, "0" VOC, low odor
- High-gloss, self-priming coating, rapid tack time
- Good gloss retention
- Use over wood, concrete and metal
- Extremely moisture insensitive
- Color stable, UV resistant topcoat
- Good abrasion and impact resistance
- Tough, flexible, highly elastomeric polymer

Typical Physical Properties

	ASTM METHOD	VALUE 7 DAYS
Elongation, %	D-638	200
Tensile, psi	D-638	1280
Tear, notched, pli	D-624	265
Hardness	Shore "D"	45

Typical Performance Data

Initial Gloss, 60 ^D	D-523	88
Gloss Retention (weatherometer-3000 hrs.)	D-26	good
Adhesion:		
Dry tape	D-3359	5B - "0" delam.
Dry scrape	D-2197	
Wet tape (24 hrs. @ 70°F)		5B - "0" delam.
Chemical Resistance	D-1308	(7 day spot test)
acid - 5% HCl		pass
acid - 5% Acetic		pass
base - 5% NaOH		pass
motor oil		pass
Solvent Resistance	D-4752	(double rubs)
MEK		4 - slight burnish
Toluene		4 - slight burnish
Isopropanol		4 - slight burnish
Flexibility	73°F(23°C)	-20°F(-29°C)
1/4 dia. Mandrel	D-1737	pass
conical mandrel	D-522	pass
Taber Abrasion	D-4060	29 mg. Loss
(CS-17, 1000 CYCLES, 1KG. LOAD)		
Dry Heat Resistance	D-2485	275°F(135°C)
Impact Resistance	D-2794	
direct		>160 in-lb
indirect		>160 in-lb
Permeability (MVT @ .030 in. equiv.)		0.03perms

900 McFarland 400 Blvd. | Alpharetta, GA 30004
 770.495.9554 (tel) 404.521.4396 (fax) | visuron@hansonco.net



POLYPRO™ 2060

Thixotropic-High Build
.004 - .008" thick w.f.t.

STANDARD DUTY / REGULAR SERVICE ALIPHATIC ONE COMPONENT (2k) POLYUREA TOPCOAT "MIAC"™ (Moisture Initiated | Amine Cured) Color Stable | Highly Resistant To Fading

APPLICATION CHARACTERISTICS

Mix ratio: 1:1 by volume

Application methods:

Brush, roller, squeegee and
spray (airless, air-assisted airless
and pressure pot)

WARNING: Spraying by any method produces fugitive mist, vapors and fumes. Extreme care must be exercised to protect personnel from exposure. Air exhausting equipment (fans / ducting) must be used to dissipate the fumes appropriately. Confined spaces require extra measures for safety. Isolation of the spray area may be necessary.

Solids (volume), No solvents. 100% theoretical.

Theoretical coverage:

1604 mil sq. ft. / gal.
401 sq. ft. / gal. (4 mil film)

Curing schedule: @ 4 mils thickness
(72°F / 50 % R. H.)

Dry to touch	40-50 minutes
Tack-free and firm:	2 hours
Through:	24 hours
Full physicals:	7 days
To Recoat:	
Minimum:	2 hours
Maximum:	12 hours

Note: If maximum recoat time is exceeded, abrade surface and chemically activate. Cure time is temperature, humidity and film thickness dependant.

Pot life (no sweat-in time required):

Fully open:	1 hour
Covered / unsealed:	2-3 hours
Sealed:	8 hours

Shelf life:

6 months unopened @ 72°F

Cleanup:

VTI CS-100 cleaning solvent, ketones.

Color Availability:

Wide Range

Packaging:

10 gal.
102 gal. kits. (Equal "A" & "B")



"POLYPRO" direct to substrate capabilities provides an excellent single-coat system with reduced installation cost. Has high gloss and retains excellent clarity and gloss during extended service periods. Compatible over properly cleaned and prepared cold-rolled and hot-rolled steel. POLYPRO exhibits excellent adhesion to concrete providing a durable, glossy, easy to clean surface. May be used over zinc-rich primers as a direct weather-resistant topcoat for heavy duty service and over intact, properly prepared existing paint as a maintenance product. POLYPRO's fast tack-free and full curing time is ideal for fast turnaround requirements. POLYPRO's unique, extreme moisture insensitivity permits unequalled use in high humidity conditions and wet environments.

Typical Uses

(light chemical exposure only recommended)

- Walls and Ceilings
Warehouse | Manufacturing | Office | Shop
- Structural Steel
Bridges | Tanks | Piping
- Industrial Plants
Chemical | Petroleum | Wastewater | Power
Pulp & Paper | Manufacturing | Food &
Beverage | Agricultural
- Marine
Ship Hulls | Docks | Decking | Offshore
Platforms | Superstructures | Barges
- Transportation
Railcar interiors/exterior | Truck exterior
Buses | Aircraft

Product Data

- Excellent vertical hang - resistant to sag
- No solvents, 100 % solids, "0" VOC, low odor
- High-gloss, self-priming coating, rapid tack time
- Good gloss retention
- Use over wood, concrete and metal
- Very moisture insensitive
- Color stable, UV resistant topcoat
- Very good abrasion and impact resistance
- Tough, flexible, highly elastomeric polymer

Typical Physical Properties

	ASTM METHOD	VALUE 7 DAYS
Elongation, %	D-638	230
Tensile, psi	D-638	1420
Tear, notched, pli	D-624	280
Hardness	Shore "D"	~50

Typical Performance Data

Initial Gloss, 60 ^D	D-523	88
Gloss Retention (weatherometer-3000 hrs.)	D-26	good
Adhesion:		
Dry tape	D-3359	5B - "0" delam.
Dry scrape	D-2197	
Wet tape (24 hrs. @ 70°F)		5B - "0" delam.
Chemical Resistance	D-1308	(7 day spot test)
acid - 5% HCl		pass
acid - 5% Acetic		pass
base - 5% NaOH		pass
motor oil		pass
Solvent Resistance	D-4752	(double rubs)
MEK		4 - slight burnish
Toluene		4 - slight burnish
Isopropanol		4 - slight burnish
Flexibility	73°F(23°C)	-20°F(-29°C)
1/4 dia. Mandrel	D-1737	pass
conical mandrel	D-522	pass
Taber Abrasion	D-4060	29 mg. Loss
(CS-17, 1000 CYCLES, 1KG. LOAD)		
Dry Heat Resistance	D-2485	275°F(135°C)
Impact Resistance	D-2794	
direct		>160 in-lb
indirect		>160 in-lb
Permeability (MVT @ .030 in. equiv.)		0.03perms

900 McFarland 400 Blvd. | Alpharetta, GA 30004
770.495.9554 (tel) 404.521.4396 (fax) | visuron@hansonco.net



POLYPRO™ 2062 CLEARCOAT

STANDARD DUTY / REGULAR SERVICE ALIPHATIC ONE COMPONENT (2k) POLYUREA CLEAR TOPCOAT “MIAC”™ (Moisture Initiated | Amine Cured) Color Stable | Highly Resistant To Fading

APPLICATION

CHARACTERISTICS

Mix ratio: 1:1 by volume

Application methods:

Brush, roller, squeegee and
spray (airless, air-assisted airless
and pressure pot)

WARNING: Spraying by any method produces fugitive mist, vapors and fumes. Extreme care must be exercised to protect personnel from exposure. Air exhausting equipment (fans / ducting) must be used to dissipate the fumes appropriately. Confined spaces require extra measures for safety. Isolation of the spray area may be necessary. Solids (volume), No solvents. 100% theoretical.

Theoretical coverage:

1604 mil sq. ft. / gal.

401 sq. ft. / gal. (4 mil film)

Curing schedule: @ 4 mils thickness

(72°F / 50 % R. H.)

Dry to touch 40-50 minutes

Tack-free and firm: 2 hours

Through: 24 hours

Full physicals: 7 days

To Recoat:

Minimum: 2 hours

Maximum: 12 hours

Note: If maximum recoat time is exceeded, abrade surface and chemically activate. Cure time is temperature, humidity and film thickness dependant.

Pot life (no sweat-in time required):

Fully open: 1 hour

Covered / unsealed: 2-3 hours

Sealed: 8 hours

Shelf life:

6 months unopened @ 72°F

Cleanup:

VTI CS-100 cleaning solvent, ketones.

Color Availability:

Clearcoat gloss

Packaging:

10 gal.

102 gal. kits. (Equal "A" & "B")



“POLYPRO” direct to substrate capabilities provides an excellent single-coat system with reduced installation cost. Has high gloss and retains excellent clarity and gloss during extended service periods. Compatible over properly cleaned and prepared cold-rolled and hot-rolled steel. POLYPRO exhibits excellent adhesion to concrete providing a durable, glossy, easy to clean surface. May be used over zinc-rich primers as a direct weather-resistant topcoat for heavy duty service and over intact, properly prepared existing paint as a maintenance product. POLYPRO’s fast tack-free and full curing time is ideal for fast turnaround requirements. POLYPRO’s unique, extreme moisture insensitivity permits unequaled use in high humidity conditions and wet environments.

Typical Uses

- Protect Decorative Surfaces
Artwork | Logos | Carvings | Mosaics | Fancy Masonry
- Transparent Weatherproofing for Signage
Store Signs | Temporary Highway Signs
Graphics
- Seal Against Light Abrasion and Chemical Damage
Decks | Park Benches | Tables | Counters
Furniture | Moldings | Playground Equipment
- Transparent Weatherproofing for Construction
Wood | Concrete | Decorative Masonry
- Optically Clear Topcoat Over Paint

Product Data

- Clear, color stable, UV protected topcoat
- No solvents, 100 % solids, “0” VOC, low odor
- High-gloss, self-priming coating, rapid tack time
- Good gloss retention
- Use over wood, concrete and metal
- Very moisture insensitive
- Rapid tack-free time
- Good abrasion and impact resistance
- Tough, flexible, highly elastomeric polymer

Typical Physical Properties

	ASTM METHOD	VALUE 7 DAYS
Elongation, %	D-638	200
Tensile, psi	D-638	1280
Tear, notched, pli	D-624	265
Hardness	Shore “D”	~40

Typical Performance Data

Initial Gloss, 60 ^D	D-523	~85
Gloss Retention (weatherometer-3000 hrs.)	D-26	very good
Adhesion:		
Dry tape	D-3359	5B - “0” delam.
Dry scrape	D-2197	
Wet tape (24 hrs. @ 70°F)		5B - “0” delam.
Chemical Resistance	D-1308	(7 day spot test)
acid - 10% HCl		not run
acid - 5% Acetic		not run
base - 10% NaOH		not run
motor oil		not run
Solvent Resistance	D-4752	(double rubs)
MEK		4 - slight burnish
Toluene		4 - slight burnish
Isopropanol		4 - slight burnish
Flexibility	73°F(23°C)	-20°F(-29°C)
1/4 dia. Mandrel	D-1737	pass pass
conical mandrel	D-522	pass pass
Taber Abrasion	D-4060	33 mg. Loss
	(CS-17, 1000 CYCLES, 1KG. LOAD)	
Dry Heat Resistance	D-2485	250°F(121°C)
Impact Resistance	D-2794	
direct		>160 in-lb
indirect		>160 in-lb
Permeability (MVT @ .030 in. equiv.)		0.03perms

900 McFarland 400 Blvd. | Alpharetta, GA 30004
770.495.9554 (tel) 404.521.4396 (fax) | visuron@hansonco.net



POLYPRO™ 6058

Non-High Build
.004" max vertical w.f.t. | .008" max horizontal w.f.t.

HEAVY DUTY / SEVERE SERVICE ALIPHATIC ONE COMPONENT (2k) POLYUREA TOPCOAT "MIAC"™ (Moisture Initiated | Amine Cured) Color Stable | Highly Resistant To Fading

APPLICATION

CHARACTERISTICS

Mix ratio: 1:1 by volume

Application methods:

Brush, roller, squeegee and
 spray (airless, air-assisted airless
 and pressure pot)

WARNING: Spraying by any method
 produces fugitive mist, vapors and fumes.

Extreme care must be exercised to
 protect personnel from exposure. Air
 exhausting equipment (fans / ducting)
 must be used to dissipate the fumes
 appropriately. Confined spaces require
 extra measures for safety. Isolation of the
 spray area may be necessary.

Solids (volume). No solvents. 100%
 theoretical.

Theoretical coverage:

1604 mil sq. ft. / gal.

401 sq. ft. / gal. (4 mil film)

Curing schedule: @ 4 mils thickness

(72°F / 50 % R. H.)

Dry to touch 40-50 minutes

Tack-free and firm: 2 hours

Through: 24 hours

Full physicals: 7 days

To Recoat:

Minimum: 2 hours

Maximum: 12 hours

Note: If maximum recoat time is ex-
 ceeded, abrade surface and chemically
 activate. Cure time is temperature,
 humidity and film thickness dependant.

Pot life (no sweat-in time required):

Fully open: 1 hour

Covered / unsealed: 2-3 hours

Sealed: 8 hours

Shelf life:

6 months unopened @ 72°F

Cleanup:

VTI CS-100 cleaning solvent, ketones.

Color Availability:

Full Spectrum

Packaging:

10 gal.

102 gal. kits. (Equal "A" & "B")



"POLYPRO" direct to substrate capabilities provides an excellent single-coat system with reduced installation cost. Has high gloss and retains excellent clarity and gloss during extended service periods. Compatible over properly cleaned and prepared cold-rolled and hot-rolled steel. POLYPRO exhibits excellent adhesion to concrete providing a durable, glossy, easy to clean surface. May be used over zinc-rich primers as a direct weather-resistant topcoat for heavy duty service and over intact, properly prepared existing paint as a maintenance product. POLYPRO's fast tack-free and full curing time is ideal for fast turnaround requirements. POLYPRO's unique, extreme moisture insensitivity permits unequaled use in high humidity conditions and wet environments.

Typical Uses

- Floor Coating | Promenade Decks
 - Warehouse | Manufacturing | Office | Walks
- Structural Steel
 - Bridges | Tanks | Piping
- Industrial Plants
 - Chemical | Petroleum | Wastewater | Power
 - Pulp & Paper | Manufacturing | Food & Beverage | Agricultural
- Marine
 - Ship Hulls | Docks | Decking | Offshore Platforms | Superstructures | Barges
- Transportation
 - Railcar interiors/exterior | Truck exterior
 - Buses | Aircraft

Product Data

- Ideal for horizontal work and thin film vertical
- No solvents, 100 % solids, "0" VOC, low odor
- High-gloss, self-priming coating
- Excellent gloss retention
- Use over wood, concrete and metal
- Extremely moisture insensitive
- Color stable, UV resistant topcoat
- Outstanding abrasion and impact resistance
- Tough, flexible, highly elastomeric polymer

Typical Physical Properties

	ASTM METHOD	VALUE 7 DAYS
Elongation, %	D-638	500
Tensile, psi	D-638	6000
Tear, notched, pli	D-624	550
Hardness	Shore "D"	50

Typical Performance Data

Initial Gloss, 60°D	D-523	88
Gloss Retention (weatherometer-3000 hrs.)	D-26	excellent
Adhesion:		
Dry tape	D-3359	5B - "0" delam.
Dry scrape	D-2197	
Wet tape (24 hrs. @ 70°F)		5B - "0" delam.
Chemical Resistance	D-1308	(7 day spot test)
acid - 10% HCl		pass
acid - 5% Acetic		pass
base - 10% NaOH		pass
motor oil		pass
Solvent Resistance	D-4752	(double rubs)
MEK		5 - no effect
Toluene		5 - no effect
Isopropanol		4 - slight burnish
Flexibility	73°F(23°C)	-20°F(-29°C)
1/4 dia. Mandrel	D-1737	pass
conical mandrel	D-522	pass
Taber Abrasion	D-4060	9 mg. Loss
(CS-17, 1000 CYCLES, 1KG. LOAD)		
Dry Heat Resistance	D-2485	300°F(149°C)
Impact Resistance	D-2794	
direct		>160 in-lb
indirect		>160 in-lb
Permeability (MVT @ .030 in. equiv.)		0.01perms

900 McFarland 400 Blvd. | Alpharetta, GA 30004
 770.495.9554 (tel) 404.521.4396 (fax) | visuron@hansonco.net



POLYPRO™ 6060

Thixotropic | High Build
.006 - .008" thick w.f.t.

HEAVY DUTY | SEVERE SERVICE ALIPHATIC ONE COMPONENT (2k) POLYUREA TOPCOAT "MIAC"™ (Moisture Initiated | Amine Cured) Color Stable - Highly Resistant To Fading

APPLICATION

CHARACTERISTICS

Mix ratio: 1:1 by volume

Application methods:

Brush, roller, squeegee and spray (airless, air-assisted airless and pressure pot)

WARNING: Spraying by any method produces fugitive mist, vapors and fumes. Extreme care must be exercised to protect personnel from exposure. Air exhausting equipment (fans / ducting) must be used to dissipate the fumes appropriately. Confined spaces require extra measures for safety. Isolation of the spray area may be necessary.

Solids (volume). No solvents. 100% theoretical.

Theoretical coverage:

1604 mil sq. ft. / gal.

401 sq. ft. / gal. (4 mil film)

Curing schedule: @ 4 mils thickness

(72°F / 50% R.H.)

Dry to touch: 40-50 minutes

Tack-free and firm: 2 hours

Through: 24 hours

Full physicals: 7 days

To Recoat:

Minimum: 2 hours

Maximum: 12 hours

Note: If maximum recoat time is exceeded, abrade surface and chemically activate. Cure time is temperature, humidity and film thickness dependant.

Pot life (no sweat-in time required):

Fully open: 1 hour

Covered / unsealed: 2-3 hours

Sealed: 8 hours

Shelf life:

6 months unopened @ 72°F

Cleanup:

VTI CS-100 cleaning solvent, ketones.

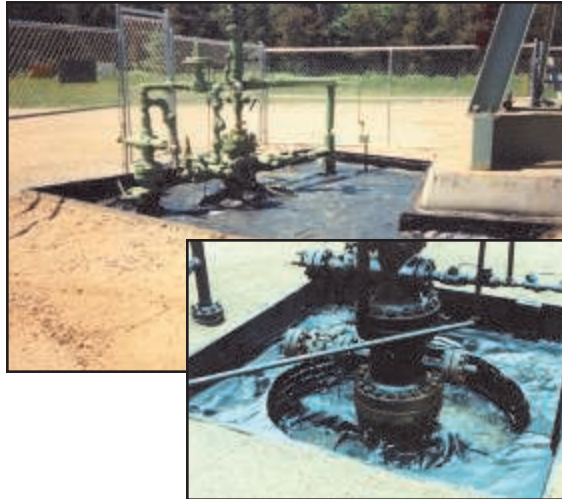
Color Availability:

Wide range.

Packaging:

10 gal.

102 gal. kits. (Equal "A" & "B")



"POLYPRO" direct to substrate capabilities provides an excellent single-coat system with reduced installation cost. Has high gloss and retains excellent clarity and gloss during extended service periods. Compatible over properly cleaned and prepared cold-rolled and hot-rolled steel. POLYPRO exhibits excellent adhesion to concrete providing a durable, glossy, easy to clean surface. May be used over zinc-rich primers as a direct weather-resistant topcoat for heavy duty service and over intact, properly prepared existing paint as a maintenance product. POLYPRO's fast tack-free and full curing time is ideal for fast turnaround requirements. POLYPRO's unique, extreme moisture insensitivity permits unequaled use in high humidity conditions and wet environments.

Typical Uses

- Walls and Ceilings
Warehouse | Manufacturing | Office | Shop
- Structural Steel
Bridges | Tanks | Piping
- Industrial Plants
Chemical | Petroleum | Wastewater | Power Pulp & Paper | Manufacturing | Food & Beverage | Agricultural
- Marine
Ship Hulls | Docks | Decking | Offshore Platforms | Superstructures | Barges
- Transportation
Railcar interiors/exterior | Truck exterior | Buses | Aircraft

Product Data

- Ideal for vertical, overhead and horizontal
- No solvents, 100 % solids, "0" VOC, low odor
- High-gloss, self-priming coating, rapid tack time
- Excellent gloss retention
- Use over wood, concrete and metal
- Extremely moisture insensitive
- Color stable, UV resistant topcoat
- Outstanding abrasion and impact resistance
- Tough, flexible, highly elastomeric polymer

Typical Physical Properties

	ASTM	VALUE
	METHOD	7 DAYS
• Elongation, %	D-638	480
• Tensile, psi	D-638	6000
• Tear, notched, pli	D-624	550
• Hardness	Shore "D"	50

Typical Performance Data

- Initial Gloss, 60° D-52 88
- Gloss Retention D-26 excellent
(weatherometer-3000 hrs.)
- Adhesion:
 - Dry tape D-3359 5B - "0" delam.
 - Dry scrape D-2197
 - Wet tape (24 hrs. @ 70°F) 5B - "0" delam.
- Chemical Resistance D-1308 (7 day spot test)
 - acid - 10% HCl pass
 - acid - 5% Acetic pass
 - base - 10% NaOH pass
 - motor oil pass
- Solvent Resistance D-4752 (double rubs)
 - MEK 5 - no effect
 - Toluene 5 - no effect
 - Isopropanol 4 - slight burnish
- Flexibility 73°F(23°C) -20°F(-29°C)
 - 1/4 dia. Mandrel D-1737 pass pass
 - conical mandrel D-522 pass pass
- Taber Abrasion D-4060 9 mg. Loss
(CS-17, 1000 CYCLES, 1KG. LOAD)
- Dry Heat Resistance D-2485 300°F(149°C)
- Impact Resistance D-2794
 - direct >160 in-lb
 - indirect >160 in-lb
- Permeability (MVT @ .030 in. equiv.) 0.01permsmoisture content is too high.

900 McFarland 400 Blvd. | Alpharetta, GA 30004
770.495.9554 (tel) 404.521.4396 (fax) | visuron@hansonco.net



VISURON
TECHNOLOGIES, INC.

POLYPRO™ 6062 CLEARCOAT

HEAVY DUTY / SEVERE SERVICE ALIPHATIC ONE COMPONENT (2k) POLYUREA CLEAR TOPCOAT “MIAC”™ (Moisture Initiated | Amine Cured) Color Stable | Highly Resistant To Fading

APPLICATION

CHARACTERISTICS

Mix ratio: 1:1 by volume

Application methods:

Brush, roller, squeegee and
spray (airless, air-assisted airless
and pressure pot)

WARNING: Spraying by any method
produces fugitive mist, vapors and fumes.
Extreme care must be exercised to
protect personnel from exposure. Air
exhausting equipment (fans / ducting)
must be used to dissipate the fumes
appropriately. Confined spaces require
extra measures for safety. Isolation of the
spray area may be necessary.

Solids (volume), No solvents. 100%
theoretical.

Theoretical coverage:

1604 mil sq. ft. / gal.

401 sq. ft. / gal. (4 mil film)

Curing schedule: @ 4 mils thickness

(72°F / 50 % R. H.)

Dry to touch 40-50 minutes

Tack-free and firm: 2 hours

Through: 24 hours

Full physicals: 7 days

To Recoat:

Minimum: 2 hours

Maximum: 12 hours

Note: If maximum recoat time is ex-
ceeded, abrade surface and chemically
activate. Cure time is temperature,
humidity and film thickness dependant.

Pot life (no sweat-in time required):

Fully open: 1 hour

Covered / unsealed: 2-3 hours

Sealed: 8 hours

Shelf life:

6 months unopened @ 72°F

Cleanup:

VTI CS-100 cleaning solvent, ketones.

Color Availability:

Clearcoat gloss

Packaging:

10 gal.

102 gal. kits. (Equal "A" & "B")



“POLYPRO” direct to substrate capabilities provides an excellent single-coat system with reduced installation cost. Has high gloss and retains excellent clarity and gloss during extended service periods. Compatible over properly cleaned and prepared cold-rolled and hot-rolled steel. POLYPRO exhibits excellent adhesion to concrete providing a durable, glossy, easy to clean surface. May be used over zinc-rich primers as a direct weather-resistant topcoat for heavy duty service and over intact, properly prepared existing paint as a maintenance product. POLYPRO’s fast tack-free and full curing time is ideal for fast turnaround requirements. POLYPRO’s unique, extreme moisture insensitivity permits unequalled use in high humidity conditions and wet environments.

Typical Uses

- Floor Coating
- Protect Decorative Surfaces
Artwork | Logos | Carvings | Mosaics | Fancy
Masonry
- Transparent Weatherproofing for Signage
Store Signs | Temp. Highway Signs | Graphics
- Seal Against Abrasion and Chemical Damage
Floors | Decks | Park Benches | Tables |
Counters
Furniture | Moldings | Playground Equipment
- Transparent Weatherproofing for Construction
Wood | Concrete | Decorative Masonry
- Optically Clear Topcoat Over Paint

Product Data

- Clear, color stable, UV protected topcoat
- No solvents, 100 % solids, “0” VOC, low odor
- High-gloss, self-priming coating
- Excellent gloss retention
- Use over wood, concrete and metal
- Extremely moisture insensitive
- Rapid tack-free time
- Outstanding abrasion and impact resistance
- Tough, flexible, highly elastomeric polymer

Typical Physical Properties

	ASTM METHOD	VALUE 7 DAYS
Elongation, %	D-638	525
Tensile, psi	D-638	4850
Tear, notched, pli	D-624	495
Hardness	Shore “D”	48

Typical Performance Data

Initial Gloss, 60 ^D	D-523	88
Gloss Retention (weatherometer-3000 hrs.)	D-26	excellent
Adhesion:		
Dry tape	D-3359	5B - “0” delam.
Dry scrape	D-2197	
Wet tape (24 hrs. @ 70°F)		5B - “0” delam.
Chemical Resistance	D-1308	(7 day spot test)
acid - 10% HCl		pass
acid - 5% Acetic		pass
base - 10% NaOH		pass
motor oil		pass
Solvent Resistance	D-4752	(double rubs)
MEK		5 - no effect
Toluene		5 - no effect
Isopropanol		4 - slight burnish
Flexibility	73°F(23°C)	-20°F(-29°C)
1/4 dia. Mandrel	D-1737	pass
conical mandrel	D-522	pass
Taber Abrasion	D-4060	12 mg. Loss
	(CS-17, 1000 CYCLES, 1KG. LOAD)	
Dry Heat Resistance	D-2485	300°F(149°C)
Impact Resistance	D-2794	
direct		>160 in-lb
indirect		>160 in-lb
Permeability (MVT @ .030 in. equiv.)		0.01perms

900 McFarland 400 Blvd. | Alpharetta, GA 30004
770.495.9554 (tel) 404.521.4396 (fax) | visuron@hansonco.net



POLYPRO™ 6120

Thixotropic—High Build
.006—.008" thick w.f.t.

HEAVY DUTY / SEVERE SERVICE ALIPHATIC ONE COMPONENT (2k) POLYUREA TOPCOAT "MIAC"™ (Moisture Initiated | Amine Cured) Color Stable | Highly Resistant To Fading



"POLYPRO" direct to substrate capabilities provides an excellent single-coat system with reduced installation cost. Has high gloss and retains excellent clarity and gloss during extended service periods. Compatible over properly cleaned and prepared cold-rolled and hot-rolled steel. POLYPRO exhibits excellent adhesion to concrete providing a durable, glossy, easy to clean surface. May be used over zinc-rich primers as a direct weather-resistant topcoat for heavy duty service and over intact, properly prepared existing paint as a maintenance product. POLYPRO's fast tack-free and full curing time is ideal for fast turnaround requirements. POLYPRO's unique, extreme moisture insensitivity permits unequalled use in high humidity conditions and wet environments.

Typical Uses

- Walls and Ceilings
Warehouse | Manufacturing | Office | Shop
- Structural Steel
Bridges | Tanks | Piping
- Industrial Plants
Chemical | Petroleum | Wastewater | Power
Pulp & Paper | Manufacturing | Food & Beverage | Agricultural
- Marine
Ship Hulls | Docks | Decking | Offshore
Platforms | Superstructures | Barges
- Transportation
Railcar interiors/exterior | Truck exterior
Buses | Aircraft

APPLICATION CHARACTERISTICS

Mix ratio: 1:1 by volume

Application methods:

Brush, roller, squeegee and spray (airless, air-assisted airless and pressure pot)

WARNING: Spraying by any method produces fugitive mist, vapors and fumes. Extreme care must be exercised to protect personnel from exposure. Air exhausting equipment (fans / ducting) must be used to dissipate the fumes appropriately. Confined spaces require extra measures for safety. Isolation of the spray area may be necessary.

Solids (volume), No solvents. 100% theoretical.

Theoretical coverage:

1604 mil sq. ft. / gal.
401 sq. ft. / gal. (4 mil film)

Curing schedule: @ 4 mils thickness
(72°F / 50 % R. H.)

Dry to touch	40-50 minutes
Tack-free and firm:	2 hours
Through:	24 hours
Full physicals:	7 days
To Recoat:	
Minimum:	2 hours
Maximum:	12 hours

Note: If maximum recoat time is exceeded, abrade surface and chemically activate. Cure time is temperature, humidity and film thickness dependant.

Pot life (no sweat-in time required):

Fully open:	1 hour
Covered / unsealed:	2-3 hours
Sealed:	8 hours

Shelf life:

6 months unopened @ 72°F

Cleanup:

VTI CS-100 cleaning solvent, ketones.

Color Availability:

Wide range

Packaging:

10 gal.
102 gal. kits. (Equal "A" & "B")

Product Data

- Ideal for vertical, overhead and horizontal
- No solvents, 100 % solids, "0" VOC, low odor
- High-gloss, self-priming coating, rapid tack time
- Excellent gloss retention
- Use over wood, concrete and metal
- Extremely moisture insensitive
- Color stable, UV resistant topcoat
- Outstanding abrasion and impact resistance
- Tough, flexible, highly elastomeric polymer

Typical Physical Properties

	ASTM METHOD	VALUE 7 DAYS
Elongation, %	D-638	450
Tensile, psi	D-638	6200
Tear, notched, pli	D-624	580
Hardness	Shore "D"	56

Typical Performance Data

Initial Gloss, 60°D	D-523	88
Gloss Retention (weatherometer-3000 hrs.)	D-26	excellent
Adhesion:		
Dry tape	D-3359	5B - "0" delam.
Dry scrape	D-2197	
Wet tape (24 hrs. @ 70°F)		5B - "0" delam.
Chemical Resistance	D-1308	(7 day spot test)
acid - 10% HCl		pass
acid - 5% Acetic		pass
base - 10% NaOH		pass
motor oil		pass
Solvent Resistance	D-4752	(double rubs)
MEK		5 - no effect
Toluene		5 - no effect
Isopropanol		4 - slight burnish
Flexibility	73°F(23°C)	-20°F(-29°C)
1/4 dia. Mandrel	D-1737	pass
conical mandrel	D-522	pass
Taber Abrasion	D-4060	6 mg. Loss
(CS-17, 1000 CYCLES, 1KG. LOAD)		
Dry Heat Resistance	D-2485	300°F(149°C)
Impact Resistance	D-2794	
direct		>160 in-lb
indirect		>160 in-lb
Permeability (MVT @ .030 in. equiv.)		0.01perms

900 McFarland 400 Blvd. | Alpharetta, GA 30004
770.495.9554 (tel) 404.521.4396 (fax) | visuron@hansonco.net



POLYPRO™ 6122 CLEARCOAT

HEAVY DUTY / SEVERE SERVICE ALIPHATIC ONE COMPONENT (2k) POLYUREA CLEAR TOPCOAT “MIAC”™ (Moisture Initiated | Amine Cured) Color Stable | Highly Resistant To Fading

APPLICATION CHARACTERISTICS

Mix ratio: 1:1 by volume

Application methods:

Brush, roller, squeegee and
spray (airless, air-assisted airless
and pressure pot)

WARNING: Spraying by any method
produces fugitive mist, vapors and fumes.
Extreme care must be exercised to
protect personnel from exposure. Air
exhausting equipment (fans / ducting)
must be used to dissipate the fumes
appropriately. Confined spaces require
extra measures for safety. Isolation of the
spray area may be necessary.
Solids (volume), No solvents. 100%
theoretical.

Theoretical coverage:

1604 mil sq. ft. / gal.
401 sq. ft. / gal. (4 mil film)

Curing schedule: @ 4 mils thickness
(72°F / 50 % R. H.)

Dry to touch	40-50 minutes
Tack-free and firm:	2 hours
Through:	24 hours
Full physicals:	7 days
To Recoat:	
Minimum:	2 hours
Maximum:	12 hours

Note: If maximum recoat time is ex-
ceeded, abrade surface and chemically
activate. Cure time is temperature,
humidity and film thickness dependant.

Pot life (no sweat-in time required):

Fully open:	1 hour
Covered / unsealed:	2-3 hours
Sealed:	8 hours

Shelf life:

6 months unopened @ 72°F

Cleanup:

VTI CS-100 cleaning solvent, ketones.

Color Availability:

Clearcoat Gloss

Packaging:

10 gal.
102 gal. kits. (Equal "A" & "B")



“POLYPRO” direct to substrate capabilities provides an excellent single-coat system with reduced installation cost. Has high gloss and retains excellent clarity and gloss during extended service periods. Compatible over properly cleaned and prepared cold-rolled and hot-rolled steel. POLYPRO exhibits excellent adhesion to concrete providing a durable, glossy, easy to clean surface. May be used over zinc-rich primers as a direct weather-resistant topcoat for heavy duty service and over intact, properly prepared existing paint as a maintenance product. POLYPRO’s fast tack-free and full curing time is ideal for fast turnaround requirements. POLYPRO’s unique, extreme moisture insensitivity permits unequaled use in high humidity conditions and wet environments.

Typical Uses

- Floor Coating
- Protect Decorative Surfaces
 Artwork | Logos | Carvings | Mosaics | Fancy
 Masonry
- Transparent Weatherproofing for Signage
 Store Signs | Temp | Highway Signs | Graphics
- Seal Against Abrasion and Chemical Damage
 Floors | Decks | Park Benches | Tables
 Counters | Furniture | Moldings
 Playground Equipment
- Transparent Weatherproofing for Construction
 Wood | Concrete | Decorative Masonry
- Optically Clear Topcoat Over Paint

Product Data

- Clear, color stable, UV protected topcoat
- No solvents, 100 % solids, “0” VOC, low odor
- High-gloss, self-priming coating
- Excellent gloss retention
- Use over wood, concrete and metal
- Extremely moisture insensitive
- Rapid tack-free time
- Outstanding abrasion and impact resistance
- Tough, flexible, highly elastomeric polymer

Typical Physical Properties

	ASTM METHOD	VALUE 7 DAYS
Elongation, %	D-638	500
Tensile, psi	D-638	5100
Tear, notched, pli	D-624	535
Hardness	Shore “D”	52

Typical Performance Data

Initial Gloss, 60 ^D	D-523	88
Gloss Retention (weatherometer-3000 hrs.)	D-26	excellent
Adhesion:		
Dry tape	D-3359	5B - “0” delam.
Dry scrape	D-2197	
Wet tape (24 hrs. @ 70°F)		5B - “0” delam.
Chemical Resistance	D-1308	(7 day spot test)
acid - 10% HCl		pass
acid - 5% Acetic		pass
base - 10% NaOH		pass
motor oil		pass
Solvent Resistance	D-4752	(double rubs)
MEK		5 - no effect
Toluene		5 - no effect
Isopropanol		4 - slight burnish
Flexibility	73°F(23°C)	-20°F(-29°C)
1/4 dia. Mandrel	D-1737	pass
conical mandrel	D-522	pass
Taber Abrasion	D-4060	10 mg. Loss
	(CS-17, 1000 CYCLES, 1KG. LOAD)	
Dry Heat Resistance	D-2485	300°F(149°C)
Impact Resistance	D-2794	
direct		>160 in-lb
indirect		>160 in-lb
Permeability (MVT @ .030 in. equiv.)		0.01perms

900 McFarland 400 Blvd. | Alpharetta, GA 30004
770.495.9554 (tel) 404.521.4396 (fax) | visuron@hansonco.net



CaseHistory

FLOOR COATING
10-12 mils thick (1) coat
Returned to service in
15 hours

PROJECT:

Floor Coating - circuit board
assembly area.

OWNER:

Mid-west area manufacturing
company (classified)

INSTALLER:

McCormick Enterprises

SYSTEM:

POLYPRO™ 6058
Color: light gray

AREA:

12,000 sq. ft.

COMPLETED:

2000



POLYPRO™
One Component (2K)

POLYPRO™ Exploration

DISCUSSION: Quick turn-around, high reflectivity, high quality, durability and excellent cleanability were the primary requirements by this computer component manufacturing company for re-coating their production area floor. Their delivery requirements necessitated a full seven day production schedule. The existing floor coating was badly deteriorated and severely in need of replacement.

The owner reluctantly shut down Friday at 1800 hours with assurance from the contractor that they would be back up by the following Monday morning.

The preparation and coating operations were completed by 0300 hours Sunday morning. Plant maintenance personnel were on the coating at 1800 hours Sunday. They applied three buffed-in coats of static releasing floor wax, replaced all equipment and turned the operations over to production Monday A.M.

PREPARATION AND COATING:

- Mop existing coating
- Squeegee 6058
- Abrade - # 60 grit disks
- Back roll 10-12 mils thick
- Porcupine roll to release air
- Re-clean
- Lap Prep tm for Adhesion



900 McFarland 400 Blvd. | Alpharetta, GA 30004
770.495.9554 (tel) 404.521.4396 (fax) | visuron@hansonco.net



VISURON
TECHNOLOGIES, INC.™

CaseHistory



BUILDING ENVELOPE WATERPROOFING

PROJECT:

Waterproofing Concrete
Block Walls

OWNER:

Hobby Lobby
Ft. Wayne, IN

INSTALLER:

Hobby Painting
Little Rock, AK

SYSTEM:

POLYPRO™ 2062
Color: Clearcoat

AREA:

14,000 sq. ft.

COMPLETED:

1997

POLYPRO™
One Component (2K)

POLYPRO™ Exploration

DISCUSSION: These split face granite style concrete block walls were re-sealed with POLYPRO 2062 clearcoat. Traditional sealers under consideration would have required repeated sealing yearly. The "2062" is still in excellent condition after three years.

The portable gasoline powered airless pump shown applied the "2062" easily at the rate of 350 sq. ft. per gallon. The 14,000 sq. ft. job was totally sprayed in four hours. The material cured in hours.

PREPARATION AND COATING:

- Power wash - 3000 psi
- Permit surface to dry
- Spray Sealer



900 McFarland 400 Blvd. | Alpharetta, GA 30004
770.495.9554 (tel) 404.521.4396 (fax) | visuron@hansonco.net



VISURON
TECHNOLOGIES, INC.™

CaseHistory

BUILDING ENVELOPE WATERPROOFING

PROJECT:

Waterproofing Concrete
Block Walls

OWNER:

Hobby Lobby
Ft. Wayne, IN

INSTALLER:

Hobby Painting
Little Rock, AK

SYSTEM:

POLYPRO™ 2060
Color: Medium Gray

AREA:

12,000 sq. ft.

COMPLETED:

1997



POLYPRO™
One Component (2K)

POLYPRO™ Exploration

DISCUSSION: These are the block rear walls of the Hobby Lobby building in Ft. Wayne. The 14,000 sq. ft. split face granite concrete block surfaces on the front of the building had been sealed with POLYPRO 2062 Clearcoat two months previously...during January, 1997. The owners were very impressed with the performance, cost effectiveness, fast turn around and cold weather application of the POLYPRO on the front of their building. They were so impressed, in fact, that they abandoned the originally specified paint for the rear of the building and had their contractor return to install the "2060" shown here. The single coat application produced this high gloss, attractive exterior finish. This photograph was taken when the "2060" was fifteen months old and had been exposed to two winters. The installation is now three years old and is in excellent condition. It should last many years.

PREPARATION AND COATING:

- Remove graffiti
- Power wash - 3000 psi
- Permit surface to dry
- Spray coating - Single coat

This job was sprayed with the Titan brand portable gasoline powered airless pump shown above. Spray pressure was about 3000 psi. The 100 % solids POLYPRO 2060 medium gray system was cut 4-5 percent with acetone to reduce viscosity. Application rate was 350 sq. ft. per gallon. The job was sprayed out in less than four hours.



900 McFarland 400 Blvd. | Alpharetta, GA 30004
770.495.9554 (tel) 404.521.4396 (fax) | visuron@hansonco.net



VISURON
TECHNOLOGIES, INC.™

CaseHistory

PLYWOOD DECK RESTORATION

PROJECT:

Restore plywood apartment decks

OWNER:

Saginaw Apartments
Saginaw, MI

INSTALLER:

ReNew Systems

SYSTEMS:

POLYPRO™ 6058
Color: beige

AREA:

100 or 200 sq. ft. each
(80) UNITS

COMPLETED:

1998



READY TO USE

POLYPRO™
One Component (2K)

POLYPRO™ Exploration

DISCUSSION: The owners of this one hundred sixty apartment complex saved substantial money by having the eighty second floor decks repaired and sealed with POLYPRO instead of removal and replacing all of the plywood sheeting as was originally planned. The project rapid turn around also minimized the disruption and inconvenience to the residents.

PREPARATION AND COATING:

- Tighten all fasteners
- Replace flashing
- Caulk edge joints
- Fill plywood joints, gouges and splintered areas
- Power sand plywood, hand sand edges
- Brush detail edges
- Roll out surface
- Broadcast anti-skid



BRUSH DETAILING



ROLLING OUT

The plywood was so badly deteriorated by the weather that the owners were going to replace all 80 decks!

900 McFarland 400 Blvd. | Alpharetta, GA 30004
770.495.9554 (tel) 404.521.4396 (fax) | visuron@hansonco.net



VISURON
TECHNOLOGIES, INC.™

CaseHistory

MEZZANINE ROOF WATERPROOFING

PROJECT:

Waterproof Walking
Mezzanine Deck

OWNER:

Marriott Hotels
West Palm Beach, FL

INSTALLER:

A to Z Coatings

SYSTEMS:

POLYPRO™ 6062 - clearcoat
POLYPRO™ 6058 - light gray
POLYARMOR® 444-370 - light
gray

AREA:

23,000 sq. ft.

COMPLETED:

1998



POLYPRO™
One Component (2K)

POLYPRO™ POLYARMOR® Exploration

DISCUSSION: The mezzanine pedestrian deck at this retirement resort also is the roof over the lobby, restaurant, offices, restrooms and hallways.

The concrete roof/deck has light pedestrian traffic every day in addition to periodic light mechanical traffic handling the furniture and personal property of the residents.

The roof system below leaked extensively due to expansion joints, concrete cracking and failure of the original membrane and repaired areas.

Power washing at 3000 psi with detergent was followed by track blasting. Rolled on PRONTO PRIME was cured and sprayed with POLYARMOR 444-370 to totally seal all leaks. The leveled uniform base then received a rolled on coat of light gray "6058", after which a "6062" clearcoat was rolled down. Blue color quartz was broadcast into that layer while still wet. Excess color quartz was removed and the job finished with a final rolled on "6062" clearcoat topcoat wear layer.

The extremely fast turn around associated with POLYARMOR® and POLYPRO™ polymers permitted large sections of this job to be coated totally in one day and returned to the owner the following day.

PREPARATION AND COATING:

- Power wash at 3000 psi
- Track blast to remove old coating
- Roll on PRONTO PRIME™
- Spray POLYARMOR 444-370 at 60 mils.– light gray.
- Roll POLYPRO 6058 at 8 mils - light gray
- Roll POLYPRO 6062 clearcoat at 4 mils and broadcast blue tri-color quartz into wet polymer
- Roll POLYPRO 6062 clearcoat lockdown topcoat at 6-8 mils.



Product Guide

	Tensile (psi) Test Method D-638	Tear (pli) Test Method D-624	Elongation (%) Test Method D- 638	Hardness Test Method Shore "D" D -2240	Toughness	Gel Time
Polyarmor® 444-370 Fast Set Spray Concrete/Steel	2750	430	425	45		12 sec
Polyarmor® 444-382 Fast Set / Heavy Duty Pure Polyurea Coating	2850	525	450	50		8-10 sec
Polyarmor® 475-375 Aromatic Plural Component Sprayable Polyurea	4100	1440	200	58		8-9 sec
Polyarmor® 490-572 High Elongation Polyurea	1800	325	800	80-85		8-9 sec
Polyarmor® 1010-PW Fast Cure Sprayable Coating / Lining	3650	920	525	50		12 sec
Polyarmor® ABR-330 Abrasion Resistant Heavy Duty / Severe Service Extremely Low Friction	5300	525	330	50		7 sec
Polyarmor® CFP-68 Highway Marking / Ultra Fast Cure / Severe Service	3500	720	300	58		
Polyarmor® Hi-Mod™ 375 Fast Cure Rigid Re-Surfacer System (patent pending)	7800		8-Jul	83		6 sec

Product Guide

General Characteristics

Polyarmor® 444-370
Fast Set Spray Concrete/Steel

All purpose. Balanced physical properties moderate chemical resistance. Excellent self-leveling.

Polyarmor® 444-382
Fast Set / Heavy Duty Pure Polyurea Coating

Pure polyurea coating. Excellent physical properties. 100% solids, good abrasion resistance, good chemical resistance, very tough with good cut resistance two part spray coating.

Polyarmor® 475-375
Aromatic Plural Component Sprayable Polyurea

Highly cross-linked plural component polyurea system that is to be applied in industrial applications only by trained and experienced applicators using specialized proportioning and dispensing equipment. Very resistant to attack from hydrocarbons such as gasoline and jet fuel.

Polyarmor® 490-572
High Elongation Polyurea

High elongation polyurea has excellent physical properties, 100% solids, chemical resistant, abrasion resistant, tough, two part spray coating giving rapid and consistent cure in applications ranging from -20°F to over 300°F

Polyarmor® 1010-PW
Fast Cure Sprayable Coating / Lining

ANSI/NSF 61 Approved, USDA Approved, 100% solids, no VOC's, Flexible, 525% elongation, Excellent thermal stability, Shock resistant, Abrasion resistant, Low perm rate, Cures -20°F to +350°F Return to service in 60 min, High Strength, Bridges moving gaps up to 1/8"W, Waterproofs, Bonds to Concrete, Steel or Wood. Highly modified polyurea copolymer. It has excellent physical properties, 100% solids, superb abrasion resistance, high-slip, good chemical resistance, tough, two part spray coating giving rapid and consistent cure in applications ranging from -20°F to over 300°F Specifically designed to be used in demanding abrasive installations requiring a flexible coating with good elongation and moderate chemical resistance.

Polyarmor® ABR-330
Abrasion Resistant Heavy Duty / Severe Service Extremely Low Friction

Highly cross-linked plural component polyurea system that is to be applied in highway marking applications only by trained and experienced applicators using specialized proportioning and dispensing equipment. It is very resistant to attack from hydrocarbons. It's aliphatic and is extremely color stable under the influence of prolonged UV exposure.

Polyarmor® CFP-68
Highway Marking / Ultra Fast Cure / Severe Service

Polyarmor® Hi-Mod™ 375
Fast Cure Rigid Re-Surfacer System (patent pending)

Structural polyurea. Superior physical properties, 100% solids, highly chemical resistant, extremely abrasion resistant, tough two part RIGID spray coating giving rapid and consistent cure in applications ranging from 20oF to over 300oF.

Product Guide

Recommended Uses

Polyarmor® 444-370
Fast Set Spray Concrete/Steel

Polyarmor® 444-382
Fast Set / Heavy Duty Pure Polyurea Coating

Polyarmor® 475-375
Aromatic Plural Component Sprayable Polyurea

Polyarmor® 490-572
High Elongation Polyurea

Polyarmor® 1010-PW
Fast Cure Sprayable Coating / Lining

Polyarmor® ABR-330
Abrasion Resistant Heavy Duty / Severe Service Extremely Low Friction

Polyarmor® CFP-68
Highway Marking / Ultra Fast Cure / Severe Service

Polyarmor® Hi-Mod™ 375
Fast Cure Rigid Re-Surfacer System (patent pending)

Bottling & Canning Facilities, Chemical Plants, Cold Storage Facilities, Fertilizer Plants, Food Processing Facilities, Industrial Facilities, Manufacturing Facilities, Marine Applications, Mining Operations, Oil & Gas Transmission, Petroleum Production & Storage, Pulp & Paper Mills, Refineries, Secondary Containment, Walkway & Parking Decks, Warehouse Floors

Chemical Plants-Secondary Containment, Coal Fired Power Plants (Coal Chute Lining, All areas where corrosion and wear is a problem), Mining-All Types, Coal Preparation Plants, Aggregate Processing, Pulp & Paper-Timber & Slurry, Steel Mills, Scrap Handling Equipment

Floors, Walls & Ceilings (Warehouse, Manufacturing, Shop), Structural Steel (Bridges, Tanks, Pipe lining), Industrial Plants (Chemical, Petroleum, Wastewater, Power Pulp & Paper, Manufacturing, Food & Beverage, Agricultural), Marine (Ship Hulls, Docks, Decking, Offshore Platforms, Superstructures, Barges), Transportation (Railcar interiors) Truck box lining, Buses, Aircraft), & Waste Water Treatment (Clarifiers, Piping, Tanks, Sweep Arms)

Concrete sealer, Secondary containment areas, Tank linings, Waste Water Linings, Digester Linings, Mechanical Rooms, Pul & Paper mills, Fertilizer plants

Potable Water Containment, Tank Linings, Waste Water Linings, Food Product Containment Lining, Railcar Lining for Food Products, Pipe Line Coating

Coal Fired Power Plants (Coal chute lining, all areas where abrasion is a problem), Mining - all types, Coal preparation plants, Aggregate processing, Pulp & Paper - timber & slurry, Steel mills, Aluminum smelters, Copper smelters, Scrap handling equipment

Long Lines: Center Lines, Edge Lines Special Markings: Cross walks, Stop Bars, Letterings, Arrows, Characters

Concrete Re-surfacer, Secondary Containment Areas, Tank Linings, Mechanical Rooms, Pulp & Paper mills, Fertilizer Plants, Petrochemical facilities, Pipe Line Coating, Cooling Tower Lining, Petroleum Prod. & Storage, Oil & Gas Transmission, Refineries/ Manufacturing Facilities

Product Guide

	Tensile (psi) Test Method D-638	Tear (pli) Test Method D-624	Elongation (%) Test Method D- 638	Hardness Test Method Shore "D" D -2240	Toughness	Gel Time
Polyarmor® Hi-Slip 850-52-2 Heavy Duty / Severe Service / Extremely Low Friction	4530	1310	270	54		8-10
Polyarmor® Warrior™ 240 Fast Cure Spray Elastomer System (patent pending)	5180	1395	240	62		6 sec
Polyarmor® Warrior™ 260 Fast Cure Spray Elastomer System	5350	730	260	62		6 sec
Polyarmor® Warrior™ 1100 Low Friction Fast Cure Spray Elastomer System	5000	1760	220	62		
PolyPro™ Pro Concrete Primer One Component (2k) Polyurea Moisture Tolerant Solvent Free						?
PolyPro™ 2058 Standard Duty / Regular Service Aliphatic One Component (2k) Polyurea Topcoat	1280	265	200	45		?
PolyPro™ 2060 Standard Duty / Regular Service Aliphatic One Component (2k) Polyurea Topcoat	1420	280	230	50		?

Product Guide

General Characteristics

Polyarmor® Hi-Slip 850-52-2
Heavy Duty / Severe Service / Extremely Low Friction

Highly cross-linked plural component polyurea system that is to be applied in industrial applications only. It is very slippery. It sheds stick products such as clay, mud, asphalt, ice, frozen coal and other frozen types of products. It is very resistant to attack from hydrocarbons. It has excellent high temperature properties withstanding temps of 400°F

Polyarmor® Warrior™ 240
Fast Cure Spray Elastomer System (patent pending)

Superior physical properties, 100% solids, highly chemical resistant, extremely abrasion resistant, tough, two part elastomeric spray coating giving rapid and consistent cure in applications ranging from -20°F - over 400°F. To be used in demanding installations requiring an elastomeric coating with superior physical properties and very high durability in harsh chemical environments.

Polyarmor® Warrior™ 260
Fast Cure Spray Elastomer System

Superior physical properties, 100% solids, highly chemical resistant, extremely abrasion resistant, tough, two part elastomeric spray coating giving rapid and consistent cure in applications ranging from -20°F - over 400°F. To be used in demanding installations requiring an elastomeric coating with superior physical properties and very high durability in harsh chemical environments.

Polyarmor® Warrior™ 1100
Low Friction Fast Cure Spray Elastomer System

Superior physical properties, 100% solids, highly chemical resistant, extremely abrasion resistant, tough, two part elastomeric spray coating giving rapid and consistent cure in applications ranging from -20°F - over 400°F. To be used in demanding installations requiring an elastomeric coating with superior physical properties and very high durability in harsh chemical environments.

PolyPro™ Pro Concrete Primer
One Component (2k) Polyurea | Moisture Tolerant | Solvent Free

One component (2K) polyurea system, moisture tolerant - cures well over damp concrete, no solvents, 100% solids, "0" VOC, low odor, High elasticity, Low viscosity, Reactive polymer designed to wick into concrete, Extremely moisture insensitive, Assists in sealing porous concrete, Promotes adhesion of topcoat to concrete, Tough, flexible, highly elastomeric primer

PolyPro™ 2058
Standard Duty / Regular Service Aliphatic One Component (2k) Polyurea Topcoat

Ideal for horizontal work and thin film vertical, No solvents, 100% solids "0" VOC, High-gloss, self-priming coating, rapid tack time, Good gloss retention, Use over wood, concrete and metal, Extremely moisture insensitive, Color stable, UV resistant topcoat, Good abrasion impact resistance, Tough, flexible, highly elastomeric polymer

PolyPro™ 2060
Standard Duty / Regular Service Aliphatic One Component (2k) Polyurea Topcoat

Walls & Ceilings (Warehouse, Manufacturing, Office, Shop), Structural Steel (Bridges, Tanks, Piping), Industrial Plants (Chemical, Petroleum, Wastewater, Power, Pulp & paper, Manufacturing, Food & Beverage, Agricultural), Marine (Ship Hulls, Docks, Decking, Offshore Platforms, Superstructures, Barges), Transportation (Railcar interiors/exterior, Truck exterior, Buses, Aircraft)

Product Guide

Recommended Uses

Polyarmor® Hi-Slip 850-52-2
Heavy Duty / Severe Service / Extremely Low Friction

Floors, Walls & Ceilings (Warehouse, Manufacturing, Shop), Structural Steel (Bridges, Tanks, Pipe lining), Industrial Plants (Chemical, Petroleum, Wastewater, Power Pulp & Paper, Manufacturing, Food & Beverage, Agricultural), Marine (Ship Hulls, Docks, Decking, Offshore Platforms, Superstructures, Barges), Transportation (Railcar interiors { frozen coal, sticky latex, etc. }), (Truck boxes { asphalt, frozen sand, salt, etc. }), Waste Water Treatment (Clarifiers, Piping, Tanks, Sweep Arms)

Polyarmor® Warrior™ 240
Fast Cure Spray Elastomer System (patent pending)

Secondary Containment Areas, Tank Linings, Waste Water Linings, Digester Linings, Mechanical Rooms, Pulp & Paper mills, Fertilizer Plants, Petrochemical facilities, Pipe Line Coating, Cooking Tower Lining, Petroleum Prod. & Storage, Oil & Gas Transmission, Refineries

Polyarmor® Warrior™ 260
Fast Cure Spray Elastomer System

Secondary Containment Areas, Tank Linings, Waste Water Linings, Digester Linings, Mechanical Rooms, Pulp & Paper Mills, Fertilizer Plants, Petrochemical Facilities, Pipe Line Coating, Cooling Tower Lining, Petroleum Prod & Storage, Oil & Gas Transmission

Polyarmor® Warrior™ 1100
Low Friction Fast Cure Spray Elastomer System

Secondary Containment Areas, Tank Linings, Waste Water Linings, Digester Linings, Mechanical Rooms, Pulp & Paper mills, Fertilizer Plants, Petrochemical facilities, Pipe Line Coating, Cooking Tower Lining, Petroleum Prod. & Storage, Oil & Gas Transmission

PolyPro™ Pro Concrete Primer
One Component (2k) Polyurea | Moisture Tolerant | Solvent Free

PolyPro™ 2058
Standard Duty / Regular Service Aliphatic One Component (2k) Polyurea Topcoat

Light to regular duty service where color stability is important - Warehouse, Manufacturing, Office, Industrial Plants (Chemical, Petroleum, Wastewater, Power, Pulp & Paper, Manufacturing, Food & Beverage, Agricultural), Flat Industrial and Commercial Roofing

PolyPro™ 2060
Standard Duty / Regular Service Aliphatic One Component (2k) Polyurea Topcoat

Excellent vertical hang, resistant to sag, No solvents, 100% solids, "0" VOC, High-gloss, Self-priming coating, rapid tack time, Good gloss retention, Use over wood, concrete and metal, Very moisture insensitive, Color stable, UV resistant topcoat, Very good abrasion and impact resistance, Tough, flexible, highly elastomeric polymer

Product Guide

	Tensile (psi) Test Method D-638	Tear (pli) Test Method D-624	Elongation (%) Test Method D- 638	Hardness Test Method Shore "D" D -2240	Toughness	Gel Time
PolyPro™ 2062 Standard Duty / Regular Service Aliphatic One Component (2k) Polyurea Clear Topcoat	1280	265	200	40		?
PolyPro™ 6058 Heavy Duty / Severe Service / Aliphatic One Component (2k) Polyurea Topcoat	6000	550	500	50		?
PolyPro™ 6060 Heavy Duty / Severe Service / Aliphatic One Component (2k) Polyurea Topcoat	6000	550	480	50		?
PolyPro™ 6062 Heavy Duty / Severe Service / Aliphatic One Component (2k) Polyurea Clear Topcoat	4850	495	525	48		?
PolyPro™ 6120 Heavy Duty / Severe Service / Aliphatic One Component (2k) Polyurea Topcoat	6200	580	450	56		?
PolyPro™ 6122 Clearcoat Heavy Duty / Severe Service / Aliphatic One Component (2k) Polyurea Clear Topcoat	5100	535	500	52		?

Product Guide

General Characteristics

PolyPro™ 2062
Standard Duty / Regular Service Aliphatic One Component (2k) Polyurea Clear Topcoat

Protect Decorative Surfaces (artwork, logos, carvings, mosaics, fancy masonry), transparent weatherproofing for signage (store signs, temporary highway signs, graphics), seal against light abrasion and chemical damage (decks, park benches, tables, counters, furniture, moldings, playground equipment), transparent weather proofing for construction (wood, concrete, decorative masonry), optically clear topcoat over paint

PolyPro™ 6058
Heavy Duty / Severe Service / Aliphatic One Component (2k) Polyurea Topcoat

Ideal for horizontal work and thin film vertical, No solvents, 100% solids "0" VOC, High-gloss, self-priming coating, rapid tack time, Excellent gloss retention, Use over wood, concrete and metal, Extremely moisture insensitive, Color stable, UV resistant topcoat, Outstanding abrasion and impact resistance, Tough, flexible, highly elastomeric polymer

PolyPro™ 6060
Heavy Duty / Severe Service / Aliphatic One Component (2k) Polyurea Topcoat

Ideal for vertical, overhead and horizontal, No solvents, 100% solids, "0" VOC, High-gloss, self-priming coating, rapid tack time, Excellent gloss retention, Use over wood, concrete and metal, Extremely moisture insensitive, Color stable, UV resistant topcoat, Outstanding abrasion and impact resistance, Tough, flexible, highly elastomeric polymer

PolyPro™ 6062
Heavy Duty / Severe Service / Aliphatic One Component (2k) Polyurea Clear Topcoat

Clear, color stable, UV protected topcoat, No solvents, 100% solids, "0" VOC, High-gloss, self-priming coating, Excellent gloss retention, Use over wood, concrete and metal, Extremely moisture insensitive, Rapid tack-free time, Outstanding abrasion and impact resistance, Tough, flexible, highly elastomeric polymer

PolyPro™ 6120
Heavy Duty / Severe Service / Aliphatic One Component (2k) Polyurea Topcoat

Ideal for vertical, overhead and horizontal, No solvents, 100% solids, "0" VOC, High-gloss, self-priming coating, rapid tack time, Excellent gloss retention, Use over wood, concrete and metal, Extremely moisture insensitive, Color stable, UV resistant topcoat, Outstanding abrasion and impact resistance, Tough, flexible, highly elastomeric polymer

PolyPro™ 6122 Clearcoat
Heavy Duty / Severe Service / Aliphatic One Component (2k) Polyurea Clear Topcoat

Clear, color stable, UV protected topcoat, No solvents, 100% solids, "0" VOC, High-gloss, self-priming coating, Excellent gloss retention, Use over wood, concrete and metal, Extremely moisture insensitive, Rapid tack-free time, Outstanding abrasion and impact resistance, Tough, flexible, highly elastomeric polymer

Product Guide

Recommended Uses

PolyPro™ 2062
Standard Duty / Regular Service Aliphatic One Component (2k) Polyurea Clear Topcoat

Clear, color stable, UV protected topcoat, No solvents, 100% solids, "0" VOC, High-gloss, self-priming coating, rapid tack time, Good gloss retention, Use over wood, concrete and metal, very moisture insensitive, rapid tack-free time, good abrasion and impact resistance, tough, flexible, highly elastomeric polymer

PolyPro™ 6058
Heavy Duty / Severe Service / Aliphatic One Component (2k) Polyurea Topcoat

Floor Coating, Promenade Decks (Warehouse, Manufacturing, Office, Walks), Structural Steel (Bridges, Tanks, Piping), Industrial Plants (Chemical, Petroleum, Wastewater, Power, Pulp & Paper, Manufacturing, Food & Beverage, Agricultural), Marine (Ship Hulls, Docks, Decking, Offshore Platforms, Superstructures, Barges), Transportation (Railcar interiors/exterior, Truck exterior, Buses, Aircraft)

PolyPro™ 6060
Heavy Duty / Severe Service / Aliphatic One Component (2k) Polyurea Topcoat

Walls & Ceilings (Warehouse, Manufacturing, Office, Shop), Structural Steel (Bridges, Tanks, Piping), Industrial Plants (Chemical, Petroleum, Wastewater, Power, Pulp & Paper, Manufacturing, Food & Beverage, Agricultural), Marine (Ship Hulls, Docks, Decking, Offshore Platforms, Superstructures, Barges), Transportation (Railcar interiors/exterior, Truck exterior, Buses, Aircraft)

PolyPro™ 6062
Heavy Duty / Severe Service / Aliphatic One Component (2k) Polyurea Clear Topcoat

Floor Coating, Protect Decorative Surfaces (artwork, logos, carvings, mosaics, fancy masonry), Transparent Weatherproofing for Signage (store signs, temp. highway signs, graphics), Seal Against Abrasion and Chemical Damage (floors, decks, park benches, tables, counters, Furniture, moldings, playground equipment), Transparent Weatherproofing for Construction (Wood, Concrete, Decorative Masonry), Optically Clear Topcoat Over Paint

PolyPro™ 6120
Heavy Duty / Severe Service / Aliphatic One Component (2k) Polyurea Topcoat

Walls & Ceilings (Warehouse, Manufacturing, Office, Shop), Structural Steel (Bridges, Tanks, Piping), Industrial Plants (Chemical, Petroleum, Wastewater, Power, Pulp & Paper, Manufacturing, Food & Beverage, Agricultural), Marine (Ship Hulls, Docks, Decking, Offshore Platforms, Superstructures, Barges), Transportation (Railcar interiors/exterior, Truck exterior, Buses, Aircraft)

PolyPro™ 6122 Clearcoat
Heavy Duty / Severe Service / Aliphatic One Component (2k) Polyurea Clear Topcoat

Floor Coating, Protect Decorative Surfaces (artwork, logos, carvings, mosaics, fancy masonry), Transparent Weatherproofing for Signage (store signs, temp. highway signs, graphics), Seal Against Abrasion and Chemical Damage (floors, decks, park benches, tables, counters, Furniture, moldings, playground equipment), Transparent Weatherproofing for Construction (Wood, Concrete, Decorative Masonry), Optically Clear Topcoat Over Paint